

Contents

Configuring VLAN mapping	1
About VLAN mapping.....	1
VLAN mapping types	1
VLAN mapping application scenarios	1
VLAN mapping implementations.....	3
Restrictions and guidelines: VLAN mapping configuration	6
VLAN mapping tasks at a glance.....	6
Prerequisites	6
Configuring one-to-one VLAN mapping	7
Configuring many-to-one VLAN mapping	7
About many-to-one VLAN mapping	7
Configuring many-to-one VLAN mapping in dynamic IP address assignment environment.....	7
Configuring many-to-one VLAN mapping in static IP address assignment environment.....	10
Configuring one-to-two VLAN mapping	12
Configuring two-to-two VLAN mapping.....	12
Display and maintenance commands for VLAN mapping.....	13
VLAN mapping configuration examples.....	13
Example: Configuring one-to-one and many-to-one VLAN mapping	13
Example: Configuring one-to-two and two-to-two VLAN mapping	18

Configuring VLAN mapping

About VLAN mapping

VLAN mapping re-marks VLAN traffic with new VLAN IDs.

VLAN mapping types

H3C provides the following types of VLAN mapping:

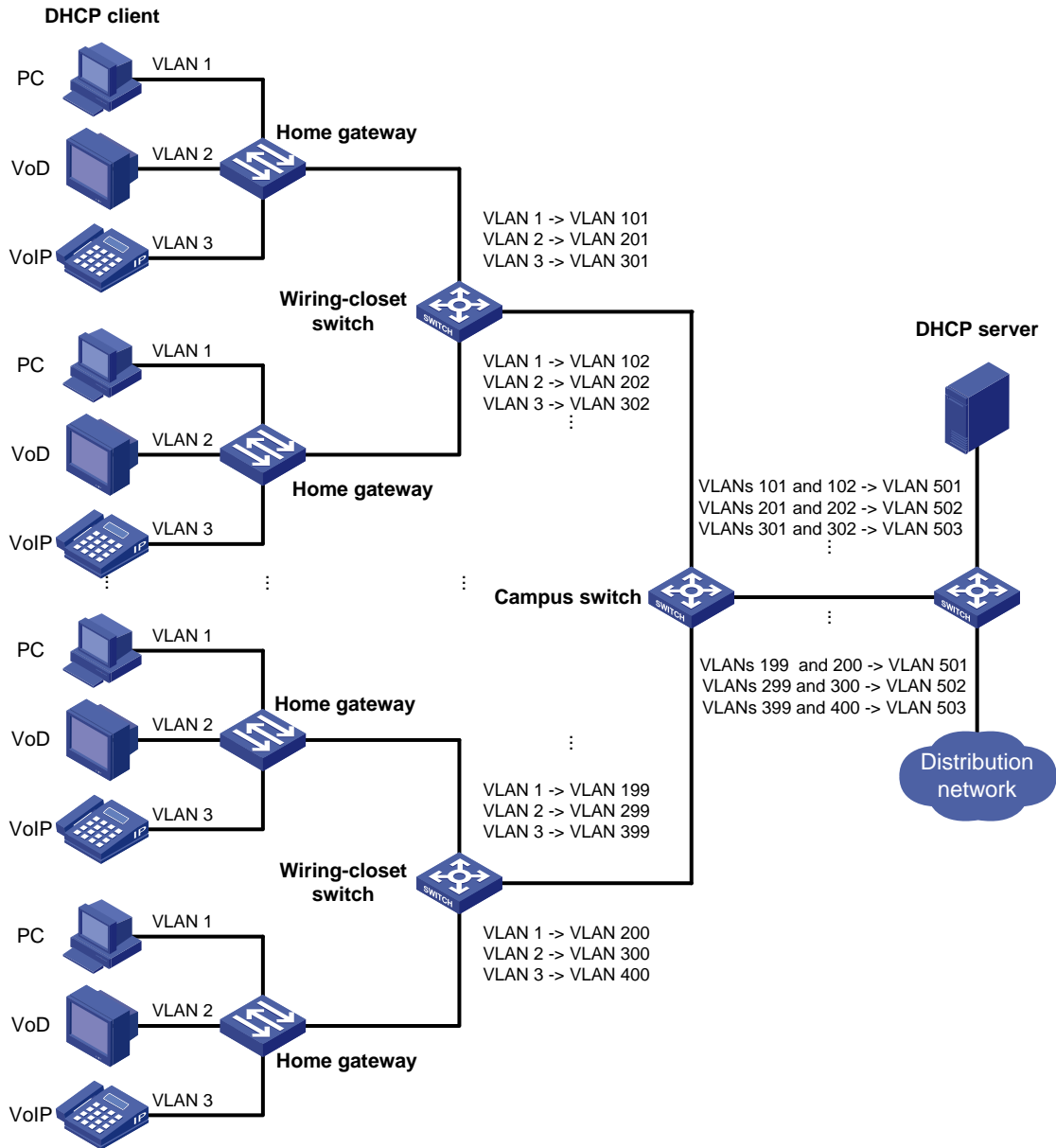
- **One-to-one VLAN mapping**—Replaces one VLAN tag with another.
- **Many-to-one VLAN mapping**—Replaces multiple VLAN tags with the same VLAN tag.
- **One-to-two VLAN mapping**—Tags single-tagged packets with an outer VLAN tag.
- **Two-to-two VLAN mapping**—Replaces the outer and inner VLAN IDs of double tagged traffic with a new pair of VLAN IDs.

VLAN mapping application scenarios

One-to-one and many-to-one VLAN mapping

One-to-one and many-to-one VLAN mapping are typically used by a community for broadband Internet access, as shown in [Figure 1](#).

Figure 1 Application scenario of one-to-one and many-to-one VLAN mapping



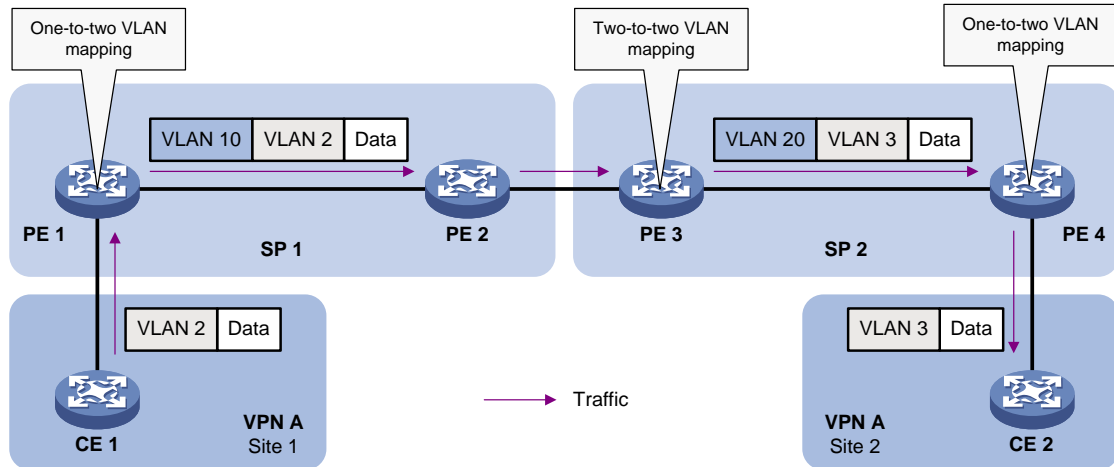
As shown in [Figure 1](#), the network is implemented as follows:

- Each home gateway uses different VLANs to transmit the PC, VoD, and VoIP services.
- To further subclassify each type of traffic by customer, configure one-to-one VLAN mapping on the wiring-closet switches. This feature assigns a separate VLAN to each type of traffic from each customer. The required total number of VLANs in the network can be very large.
- To prevent the maximum number of VLANs from being exceeded on the distribution layer device, configure many-to-one VLAN mapping on the campus switch. This feature assigns the same VLAN to the same type of traffic from different customers.

One-to-two and two-to-two VLAN mapping

One-to-two and two-to-two VLAN mapping are typically used to implement communication across different SP networks, as shown in [Figure 2](#).

Figure 2 Application scenario of one-to-two and two-to-two VLAN mapping



As shown in Figure 2, Site 1 and Site 2 of VPN A are in VLAN 2 and VLAN 3, respectively. The SP 1 network assigns SVLAN 10 to Site 1. The SP 2 network assigns SVLAN 20 to Site 2. When the packet from Site 1 arrives at PE 1, PE 1 tags the packet with SVLAN 10 by using one-to-two VLAN mapping.

When the double-tagged packet from the SP 1 network arrives at the SP 2 network interface, PE 3 processes the packet as follows:

- Replaces SVLAN tag 10 with SVLAN tag 20.
- Replaces CVLAN tag 2 with CVLAN tag 3.

One-to-two VLAN mapping provides the following benefits:

- Enables a customer network to plan its CVLAN assignment without conflicting with SVLANs.
- Adds a VLAN tag to a tagged packet and expands the number of available VLANs to 4094 x 4094.
- Reduces the stress on the SVLAN resources, which were 4094 VLANs in the SP network before the mapping process was initiated.

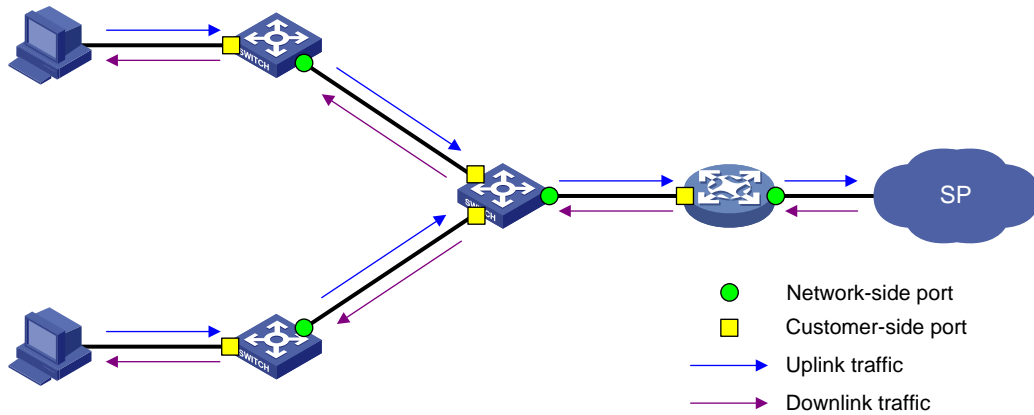
VLAN mapping implementations

Figure 3 shows a simplified network that illustrates basic VLAN mapping terms.

Basic VLAN mapping terms include the following:

- **Uplink traffic**—Traffic transmitted from the customer network to the service provider network.
- **Downlink traffic**—Traffic transmitted from the service provider network to the customer network.
- **Network-side port**—A port connected to or closer to the service provider network.
- **Customer-side port**—A port connected to or closer to the customer network.

Figure 3 Basic VLAN mapping terms

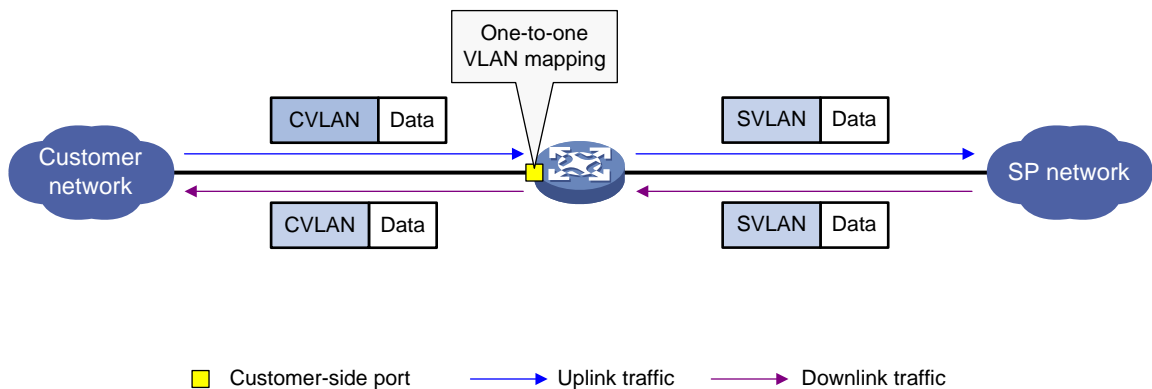


One-to-one VLAN mapping

As shown in [Figure 4](#), one-to-one VLAN mapping is implemented on the customer-side port and replaces VLAN tags as follows:

- Replaces the CVLAN with the SVLAN for the uplink traffic.
- Replaces the SVLAN with the CVLAN for the downlink traffic.

Figure 4 One-to-one VLAN mapping implementation

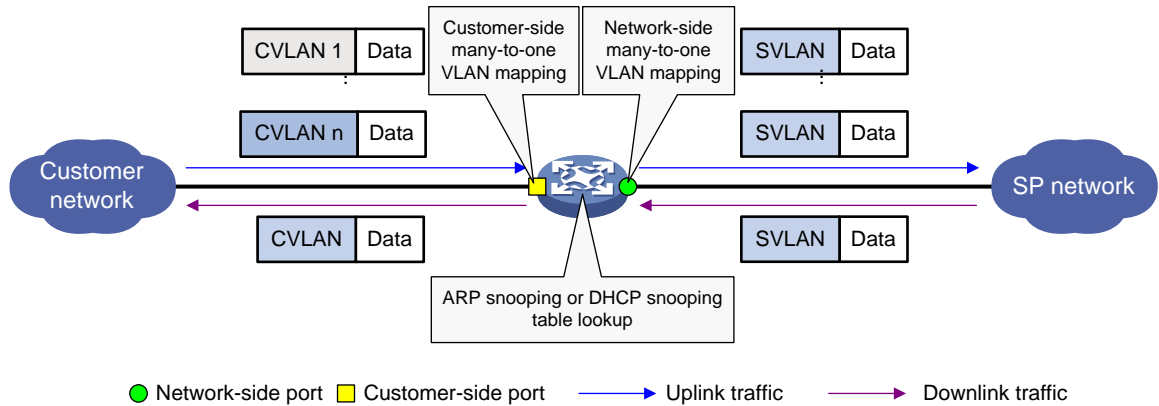


Many-to-one VLAN mapping

As shown in [Figure 5](#), many-to-one VLAN mapping is implemented on both the customer-side and network-side ports as follows:

- For the uplink traffic, the customer-side many-to-one VLAN mapping replaces multiple CVLANs with the same SVLAN.
- For the downlink traffic, the network-side many-to-one VLAN mapping replaces the SVLAN with the CVLAN found in the DHCP snooping table or ARP snooping table. For more information about DHCP snooping and ARP snooping, see *Layer 3—IP Services Configuration Guide*.

Figure 5 Many-to-one VLAN mapping implementation



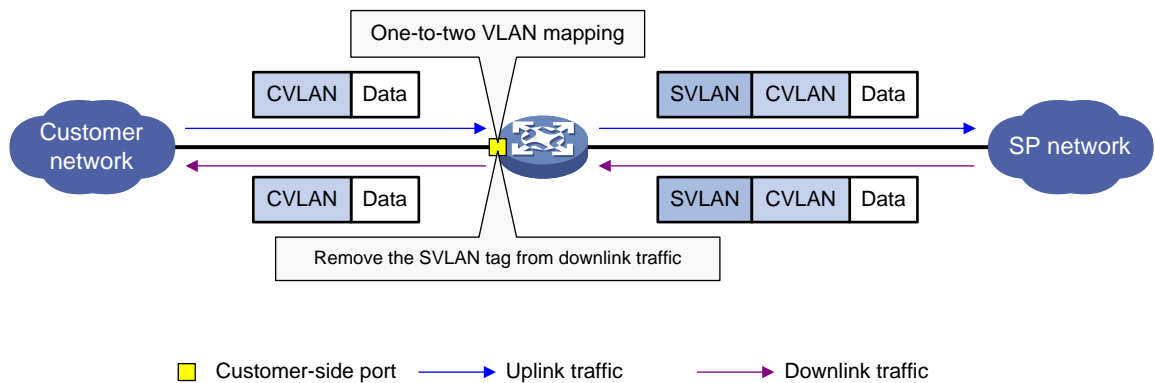
One-to-two VLAN mapping

As shown in [Figure 6](#), one-to-two VLAN mapping is implemented on the customer-side port to add the SVLAN tag for the uplink traffic.

For the downlink traffic to be correctly sent to the customer network, make sure the SVLAN tag is removed on the customer-side port before transmission. Use one of the following methods to remove the SVLAN tag from the downlink traffic:

- Configure the customer-side port as a hybrid port and assign the port to the SVLAN as an untagged member.
- Configure the customer-side port as a trunk port and set the port PVID to the SVLAN.

Figure 6 One-to-two VLAN mapping implementation

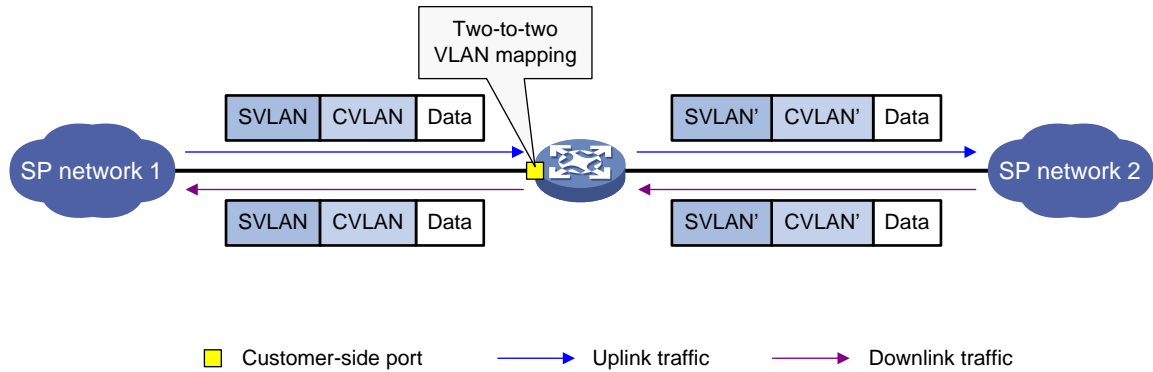


Two-to-two VLAN mapping

As shown in [Figure 7](#), two-to-two VLAN mapping is implemented on the customer-side port and replaces VLAN tags as follows:

- Replaces the CVLAN and the SVLAN with the CVLAN' and the SVLAN' for the uplink traffic.
- Replaces the SVLAN' and CVLAN' with the SVLAN and the CVLAN for the downlink traffic.

Figure 7 Two-to-two VLAN mapping implementation



Restrictions and guidelines: VLAN mapping configuration

To add VLAN tags to packets, you can configure both VLAN mapping and QinQ. VLAN mapping takes effect if a configuration conflict occurs. For more information about QinQ, see "Configuring QinQ."

To add or replace VLAN tags for packets, you can configure both VLAN mapping and a QoS policy. The QoS policy takes effect if a configuration conflict occurs. For information about QoS policies, see *ACL and QoS Configuration Guide*.

Do not configure VLAN mapping and Ethernet service instance-to-VSI binding on the same Layer 2 Ethernet interface or Layer 2 aggregate interface. Otherwise, these features might not take effect.

VLAN mapping tasks at a glance

Use the appropriate VLAN mapping methods for the devices in the network.

To configure VLAN mapping, perform the following tasks:

- [Configuring one-to-one VLAN mapping](#)
Configure one-to-one VLAN mapping on the wiring-closet switch, as shown in [Figure 1](#).
- [Configuring many-to-one VLAN mapping](#)
Configure many-to-one VLAN mapping on the campus switch, as shown in [Figure 1](#).
 - [Configuring many-to-one VLAN mapping in dynamic IP address assignment environment](#)
 - [Configuring many-to-one VLAN mapping in static IP address assignment environment](#)
- [Configuring one-to-two VLAN mapping](#)
Configure one-to-two VLAN mapping on PE 1 and PE 4, as shown in [Figure 2](#), through which traffic from customer networks enters the service provider networks.
- [Configuring two-to-two VLAN mapping](#)
Configure two-to-two VLAN mapping on PE 3, as shown in [Figure 2](#), which is an edge device of the SP 2 network.

Prerequisites

Before you configure VLAN mapping, create original and translated VLANs.

Configuring one-to-one VLAN mapping

About one-to-one VLAN mapping

Configure one-to-one VLAN mapping on the customer-side ports of wiring-closet switches (see [Figure 1](#)) to isolate traffic of the same service type from different homes.

Procedure

1. Enter system view.
system-view
2. Enter interface view.
 - o Enter Layer 2 Ethernet interface view.
interface *interface-type interface-number*
 - o Enter Layer 2 aggregate interface view.
interface bridge-aggregation *interface-number*
3. Set the link type of the port.
port link-type { **hybrid** | **trunk** }
By default, the link type of a port is **access**.
4. Assign the port to the original VLAN and the translated VLAN.
 - o Assign the trunk port to the original VLAN and the translated VLAN.
port trunk permit vlan *vlan-id-list*
By default, a trunk port is assigned to VLAN 1.
 - o Assign the hybrid port to the original VLAN and the translated VLAN as a tagged member.
port hybrid vlan *vlan-id-list* **tagged**
By default, a hybrid port is an untagged member of the VLAN to which the port belongs when its link type is access.
5. Configure a one-to-one VLAN mapping.
vlan mapping *vlan-id translated-vlan* *vlan-id*
By default, no VLAN mapping is configured on an interface.

Configuring many-to-one VLAN mapping

About many-to-one VLAN mapping

Configure many-to-one VLAN mapping on campus switches (see [Figure 1](#)) to transmit the same type of traffic from different users in one VLAN.

Configuring many-to-one VLAN mapping in dynamic IP address assignment environment

About many-to-one VLAN mapping in dynamic IP address assignment environment

In a network that uses dynamic address assignment, configure many-to-one VLAN mapping with DHCP snooping.

The switch replaces the SVLAN tag of the downlink traffic with the associated CVLAN tag based on the DHCP snooping entry lookup.

Restrictions and guidelines for many-to-one VLAN mapping in dynamic IP address assignment environment

To ensure correct traffic forwarding from the service provider network to the customer network, do not configure many-to-one VLAN mapping together with uRPF. For more information about uRPF, see *Security Configuration Guide*.

To modify many-to-one VLAN mappings, first use the `reset dhcp snooping binding` command to clear the DHCP snooping entries.

Many-to-one VLAN mapping in dynamic IP address assignment environment tasks at a glance

To configure many-to-one VLAN mapping in dynamic IP address assignment environment, perform the following tasks:

1. [Enabling DHCP snooping](#)
2. [Enabling ARP detection](#)
3. [Configuring the customer-side port](#)
4. [Configuring the network-side port](#)

Enabling DHCP snooping

1. Enter system view.
`system-view`
2. Enable DHCP snooping.
`dhcp snooping enable`
By default, DHCP snooping is disabled.

Enabling ARP detection

1. Enter system view.
`system-view`
2. Enter VLAN view.
`vlan vlan-id`
3. Enable ARP detection.
`arp detection enable`
By default, ARP detection is disabled.
You must enable ARP detection for the original VLANs and the translated VLANs.

Configuring the customer-side port

1. Enter system view.
`system-view`
2. Enter interface view.
 - Enter Layer 2 Ethernet interface view.
`interface interface-type interface-number`
 - Enter Layer 2 aggregate interface view.
`interface bridge-aggregation interface-number`
3. Set the link type of the port.
`port link-type { hybrid | trunk }`
By default, the link type of a port is **access**.
4. Assign the port to the original VLANs and the translated VLAN.
 - Assign the trunk port to the original VLANs and the translated VLAN.

```
port trunk permit vlan vlan-id-list
```

By default, a trunk port is assigned to VLAN 1.

- Assign the hybrid port to the original VLANs and the translated VLAN as a tagged member.

```
port hybrid vlan vlan-id-list tagged
```

By default, a hybrid port is an untagged member of the VLAN to which the port belongs when its link type is access.

5. Configure a many-to-one VLAN mapping.

```
vlan mapping uni { range vlan-range-list | single vlan-id-list }  
translated-vlan vlan-id
```

By default, no VLAN mapping is configured on an interface.

6. Enable DHCP snooping entry recording.

```
dhcp snooping binding record
```

By default, DHCP snooping entry recording is disabled on an interface.

Configuring the network-side port

1. Enter system view.

```
system-view
```

2. Enter interface view.

- Enter Layer 2 Ethernet interface view.

```
interface interface-type interface-number
```

- Enter Layer 2 aggregate interface view.

```
interface bridge-aggregation interface-number
```

3. Set the link type of the port.

```
port link-type { hybrid | trunk }
```

By default, the link type of a port is **access**.

4. Assign the port to the translated VLAN.

- Assign the trunk port to the translated VLAN.

```
port trunk permit vlan vlan-id-list
```

By default, a trunk port is assigned to VLAN 1.

- Assign the hybrid port to the translated VLAN as a tagged member.

```
port hybrid vlan vlan-id-list tagged
```

By default, a hybrid port is an untagged member of the VLAN to which the port belongs when its link type is access.

5. Configure the port as a DHCP snooping trusted port.

```
dhcp snooping trust
```

By default, all ports that support DHCP snooping are untrusted ports when DHCP snooping is enabled.

6. Configure the port as an ARP trusted port.

```
arp detection trust
```

By default, all ports are ARP untrusted ports.

7. Configure the port to use the original VLAN tags of the many-to-one mapping to replace the VLAN tags of the packets destined for the user network.

```
vlan mapping nni
```

By default, the port does not replace the VLAN tags of the packets destined for the user network.

Configuring many-to-one VLAN mapping in static IP address assignment environment

About many-to-one VLAN mapping in static IP address assignment environment

In a network that uses static IP addresses, configure many-to-one VLAN mapping with ARP snooping.

The switch replaces the SVLAN tag of the downlink traffic with the associated CVLAN tag based on the ARP snooping entry lookup.

Restrictions and guidelines for many-to-one VLAN mapping in static IP address assignment environment

When you configure many-to-one VLAN mapping in a network that uses static address assignment, follow these restrictions and guidelines:

- Make sure hosts in different CVLANs do not use the same IP address.
- When an IP address is no longer associated with the MAC address and VLAN in an ARP snooping entry, wait for this entry to be aged out. You can also use the **reset arp snooping ip ip-address** command to clear the entry.
- Before you modify many-to-one VLAN mapping, use the **reset arp snooping vlan vlan-id** command to clear the ARP snooping entries in each CVLAN.
- To ensure correct traffic forwarding from the service provider network to the customer network, do not configure many-to-one VLAN mapping together with uRPF. For more information about uRPF, see *Security Configuration Guide*.

Many-to-one VLAN mapping in static IP address assignment environment tasks at a glance

To configure many-to-one VLAN mapping in static IP address assignment environment, perform the following tasks:

1. [Enabling ARP snooping](#)
2. [Configuring the customer-side port](#)
3. [Configuring the network-side port](#)

Enabling ARP snooping

1. Enter system view.
system-view
2. Enter VLAN view.
vlan *vlan-id*
3. Enable ARP snooping.
arp snooping enable

By default, ARP snooping is disabled.

You must enable ARP snooping for the original VLANs and the translated VLANs.

Configuring the customer-side port

1. Enter system view.
system-view
2. Enter interface view.
 - Enter Layer 2 Ethernet interface view.
interface *interface-type interface-number*
 - Enter Layer 2 aggregate interface view.
interface bridge-aggregation *interface-number*

3. Set the link type of the port.
port link-type { hybrid | trunk }
 By default, the link type of a port is **access**.
4. Assign the port to the original VLANs and the translated VLAN.
 - Assign the trunk port to the original VLANs and the translated VLAN.
port trunk permit vlan vlan-id-list
By default, a trunk port is assigned to VLAN 1.
 - Assign the hybrid port to the original VLANs and the translated VLAN as a tagged member.
port hybrid vlan vlan-id-list tagged
By default, a hybrid port is an untagged member of the VLAN to which the port belongs when its link type is access.
5. Configure a many-to-one VLAN mapping.
vlan mapping uni { range vlan-range-list | single vlan-id-list } translated-vlan vlan-id
 By default, no VLAN mapping is configured on an interface.

Configuring the network-side port

1. Enter system view.
system-view
2. Enter interface view.
 - Enter Layer 2 Ethernet interface view.
interface interface-type interface-number
 - Enter Layer 2 aggregate interface view.
interface bridge-aggregation interface-number
3. Set the link type of the port.
port link-type { hybrid | trunk }
 By default, the link type of a port is **access**.
4. Assign the port to the translated VLAN.
 - Assign the trunk port to the translated VLAN.
port trunk permit vlan vlan-id-list
By default, a trunk port is assigned to VLAN 1.
 - Assign the hybrid port to the translated VLAN as a tagged member.
port hybrid vlan vlan-id-list tagged
By default, a hybrid port is an untagged member of the VLAN to which the port belongs when its link type is access.
5. Configure the port to use the original VLAN tags of the many-to-one mapping to replace the VLAN tags of the packets destined for the user network.
vlan mapping nni
 By default, the port does not replace the VLAN tags of the packets destined for the user network.

Configuring one-to-two VLAN mapping

About one-to-two VLAN mapping

Configure one-to-two VLAN mapping on the customer-side ports of edge devices from which customer traffic enters SP networks, for example, on PEs 1 and 4 in [Figure 2](#). One-to-two VLAN mapping enables the edge devices to add an SVLAN tag to each incoming packet.

Restrictions and guidelines

Only one SVLAN tag can be added to packets from the same CVLAN. To add different SVLAN tags to different CVLAN packets on a port, set the port link type to hybrid and configure multiple one-to-two VLAN mappings.

The MTU of an interface is 1500 bytes by default. After a VLAN tag is added to a packet, the packet length is added by 4 bytes. As a best practice, set the MTU to a minimum of 1504 bytes for ports on the forwarding path of the packet in the service provider network.

Procedure

1. Enter system view.
system-view
2. Enter interface view.
 - o Enter Layer 2 Ethernet interface view.
interface interface-type interface-number
 - o Enter Layer 2 aggregate interface view.
interface bridge-aggregation interface-number
3. Set the link type of the port.
port link-type { hybrid | trunk }
By default, the link type of a port is **access**.
4. Configure the port to allow packets from the SVLAN to pass through untagged.
 - o Configure the SVLAN as the PVID of the trunk port and assign the trunk port to the SVLAN.
port trunk pvid vlan vlan-id
port trunk permit vlan {vlan-id-list | all }
 - o Assign the hybrid port to the SVLAN as an untagged member.
port hybrid vlan vlan-id-list untagged
5. Configure a one-to-two VLAN mapping.
vlan mapping nest { range vlan-range-list | single vlan-id-list }
nested-vlan vlan-id
By default, no VLAN mapping is configured on an interface.

Configuring two-to-two VLAN mapping

About two-to-two VLAN mapping

Configure two-to-two VLAN mapping on the customer-side port of an edge device that connects two SP networks, for example, on PE 3 in [Figure 2](#). Two-to-two VLAN mapping enables two sites in different VLANs to communicate at Layer 2 across two service provider networks that use different VLAN assignment schemes.

Procedure

1. Enter system view.

- system-view**
2. Enter interface view.
 - Enter Layer 2 Ethernet interface view.
interface *interface-type interface-number*
 - Enter Layer 2 aggregate interface view.
interface bridge-aggregation *interface-number*
 3. Set the link type of the port.
port link-type { **hybrid** | **trunk** }
By default, the link type of a port is **access**.
 4. Assign the port to the original VLANs and the translated VLANs.
 - Assign the trunk port to the original VLANs and the translated VLANs.
port trunk permit vlan *vlan-id-list*
By default, a trunk port is assigned to VLAN 1.
 - Assign the hybrid port to the original VLANs and the translated VLANs as a tagged member.
port hybrid vlan *vlan-id-list* **tagged**
By default, a hybrid port is an untagged member of the VLAN to which the port belongs when its link type is access.
 5. Configure a two-to-two VLAN mapping.
vlan mapping tunnel *outer-vlan-id inner-vlan-id translated-vlan outer-vlan-id inner-vlan-id*
By default, no VLAN mapping is configured on an interface.

Display and maintenance commands for VLAN mapping

Execute **display** commands in any view.

Task	Command
Display VLAN mapping information.	display vlan mapping [interface <i>interface-type interface-number</i>]

VLAN mapping configuration examples

Example: Configuring one-to-one and many-to-one VLAN mapping

Network configuration

As shown in [Figure 8](#):

- Each household subscribes to PC, VoD, and VoIP services, and obtains the IP address through DHCP.
- On the home gateways, VLANs 1, 2, and 3 are assigned to PC, VoD, and VoIP traffic, respectively.

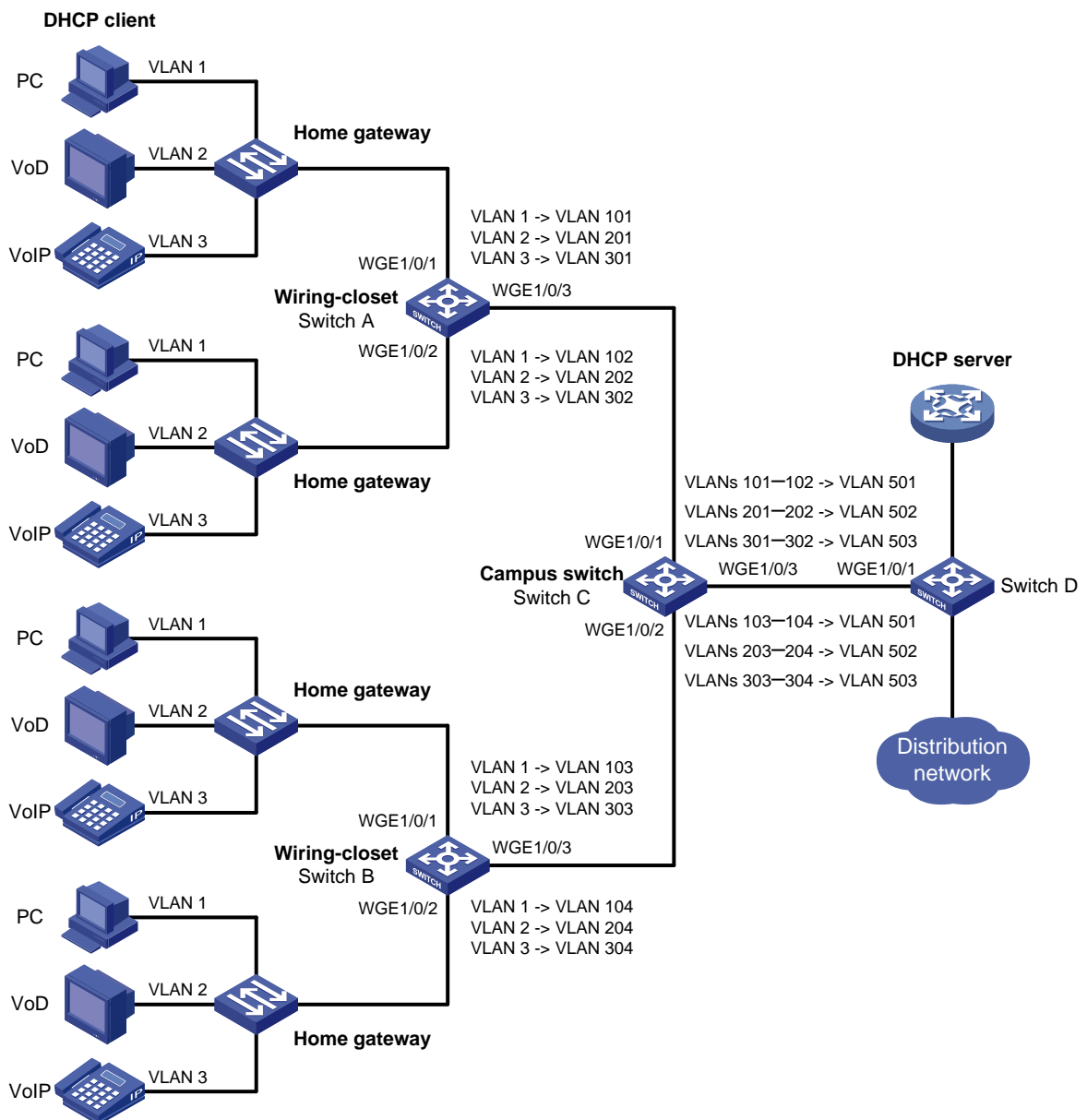
To isolate traffic of the same service type from different households, configure one-to-one VLAN mappings on the wiring-closet switches. This feature assigns one VLAN to each type of traffic from each household.

To save VLAN resources, configure many-to-one VLAN mappings on the campus switch (Switch C). This feature transmits the same type of traffic from different households in one VLAN. Use VLANs 501, 502, and 503 for PC, VoD, and VoIP traffic, respectively.

Table 1 VLAN mappings for each service

Service	VLANs on home gateways	VLANs on wiring-closet switches (Switch A and Switch B)	VLANs on campus switch (Switch C)
PC	VLAN 1	VLANs 101, 102, 103, 104	VLAN 501
VoD	VLAN 2	VLANs 201, 202, 203, 204	VLAN 502
VoIP	VLAN 3	VLANs 301, 302, 303, 304	VLAN 503

Figure 8 Network diagram



Procedure

1. Configure Switch A:

Create the original VLANs.

```
<SwitchA> system-view  
[SwitchA] vlan 2 to 3
```

Create the translated VLANs.

```
[SwitchA] vlan 101 to 102  
[SwitchA] vlan 201 to 202  
[SwitchA] vlan 301 to 302
```

Configure customer-side port Twenty-FiveGigE 1/0/1 as a trunk port.

```
<SwitchA> system-view  
[SwitchA] interface twenty-fivegige 1/0/1  
[SwitchA-Twenty-FiveGigE1/0/1] port link-type trunk
```

Assign Twenty-FiveGigE 1/0/1 to all original VLANs and translated VLANs.

```
[SwitchA-Twenty-FiveGigE1/0/1] port trunk permit vlan 1 2 3 101 201 301
```

Configure one-to-one VLAN mappings on Twenty-FiveGigE 1/0/1 to map VLANs 1, 2, and 3 to VLANs 101, 201, and 301, respectively.

```
[SwitchA-Twenty-FiveGigE1/0/1] vlan mapping 1 translated-vlan 101  
[SwitchA-Twenty-FiveGigE1/0/1] vlan mapping 2 translated-vlan 201  
[SwitchA-Twenty-FiveGigE1/0/1] vlan mapping 3 translated-vlan 301  
[SwitchA-Twenty-FiveGigE1/0/1] quit
```

Configure customer-side port Twenty-FiveGigE 1/0/2 as a trunk port.

```
[SwitchA] interface twenty-fivegige 1/0/2  
[SwitchA-Twenty-FiveGigE1/0/2] port link-type trunk
```

Assign Twenty-FiveGigE 1/0/2 to all original VLANs and translated VLANs.

```
[SwitchA-Twenty-FiveGigE1/0/2] port trunk permit vlan 1 2 3 102 202 302
```

Configure one-to-one VLAN mappings on Twenty-FiveGigE 1/0/2 to map VLANs 1, 2, and 3 to VLANs 102, 202, and 302, respectively.

```
[SwitchA-Twenty-FiveGigE1/0/2] vlan mapping 1 translated-vlan 102  
[SwitchA-Twenty-FiveGigE1/0/2] vlan mapping 2 translated-vlan 202  
[SwitchA-Twenty-FiveGigE1/0/2] vlan mapping 3 translated-vlan 302  
[SwitchA-Twenty-FiveGigE1/0/2] quit
```

Configure the network-side port (Twenty-FiveGigE 1/0/3) as a trunk port.

```
[SwitchA] interface twenty-fivegige 1/0/3  
[SwitchA-Twenty-FiveGigE1/0/3] port link-type trunk
```

Assign Twenty-FiveGigE 1/0/3 to the translated VLANs.

```
[SwitchA-Twenty-FiveGigE1/0/3] port trunk permit vlan 101 201 301 102 202 302  
[SwitchA-Twenty-FiveGigE1/0/3] quit
```

2. Configure Switch B in the same way Switch A is configured. (Details not shown.)

3. Configure Switch C:

Enable DHCP snooping.

```
<SwitchC> system-view  
[SwitchC] dhcp snooping enable
```

Create the original VLANs and translated VLANs, and enable ARP detection for these VLANs.

```
[SwitchC] vlan 101  
[SwitchC-vlan101] arp detection enable
```



```

[SwitchC-vlan101] vlan 201
[SwitchC-vlan201] arp detection enable
[SwitchC-vlan201] vlan 301
[SwitchC-vlan301] arp detection enable
[SwitchC-vlan301] vlan 102
[SwitchC-vlan102] arp detection enable
[SwitchC-vlan102] vlan 202
[SwitchC-vlan202] arp detection enable
[SwitchC-vlan202] vlan 302
[SwitchC-vlan302] arp detection enable
[SwitchC-vlan302] vlan 103
[SwitchC-vlan103] arp detection enable
[SwitchC-vlan103] vlan 203
[SwitchC-vlan203] arp detection enable
[SwitchC-vlan203] vlan 303
[SwitchC-vlan303] arp detection enable
[SwitchC-vlan303] vlan 104
[SwitchC-vlan104] arp detection enable
[SwitchC-vlan104] vlan 204
[SwitchC-vlan204] arp detection enable
[SwitchC-vlan204] vlan 304
[SwitchC-vlan304] arp detection enable
[SwitchC-vlan304] vlan 501
[SwitchC-vlan501] arp detection enable
[SwitchC-vlan501] vlan 502
[SwitchC-vlan502] arp detection enable
[SwitchC-vlan502] vlan 503
[SwitchC-vlan503] arp detection enable
[SwitchC-vlan503] quit

```

Configure customer-side port Twenty-FiveGigE 1/0/1 as a trunk port.

```

[SwitchC] interface twenty-fivegige 1/0/1
[SwitchC-Twenty-FiveGigE1/0/1] port link-type trunk

```

Assign Twenty-FiveGigE 1/0/1 to all original VLANs and translated VLANs.

```

[SwitchC-Twenty-FiveGigE1/0/1] port trunk permit vlan 101 102 201 202 301 302 501 to
503

```

Configure many-to-one VLAN mappings on Twenty-FiveGigE 1/0/1 to map VLANs for PC, VoD, and VoIP traffic to VLANs 501, 502, and 503, respectively.

```

[SwitchC-Twenty-FiveGigE1/0/1] vlan mapping uni range 101 to 102 translated-vlan 501
[SwitchC-Twenty-FiveGigE1/0/1] vlan mapping uni range 201 to 202 translated-vlan 502
[SwitchC-Twenty-FiveGigE1/0/1] vlan mapping uni range 301 to 302 translated-vlan 503

```

Enable DHCP snooping entry recording on Twenty-FiveGigE 1/0/1.

```

[SwitchC-Twenty-FiveGigE1/0/1] dhcp snooping binding record
[SwitchC-Twenty-FiveGigE1/0/1] quit

```

Configure customer-side port Twenty-FiveGigE 1/0/2 as a trunk port.

```

[SwitchC] interface twenty-fivegige 1/0/2
[SwitchC-Twenty-FiveGigE1/0/2] port link-type trunk

```

Assign Twenty-FiveGigE 1/0/2 to all original VLANs and translated VLANs.

```
[SwitchC-Twenty-FiveGigE1/0/2] port trunk permit vlan 103 104 203 204 303 304 501 to
503
# Configure many-to-one VLAN mappings on Twenty-FiveGigE 1/0/2 to map VLANs for PC,
VoD, and VoIP traffic to VLANs 501, 502, and 503, respectively.
[SwitchC-Twenty-FiveGigE1/0/2] vlan mapping uni range 103 to 104 translated-vlan 501
[SwitchC-Twenty-FiveGigE1/0/2] vlan mapping uni range 203 to 204 translated-vlan 502
[SwitchC-Twenty-FiveGigE1/0/2] vlan mapping uni range 303 to 304 translated-vlan 503
# Enable recording of client information in DHCP snooping entries on Twenty-FiveGigE 1/0/2.
[SwitchC-Twenty-FiveGigE1/0/2] dhcp snooping binding record
[SwitchC-Twenty-FiveGigE1/0/2] quit
# Configure the network-side port (Twenty-FiveGigE 1/0/3) to use the original VLAN tags of the
many-to-one mappings to replace the VLAN tags of the packets destined for the user network.
[SwitchC] interface twenty-fivegige 1/0/3
[SwitchC-Twenty-FiveGigE1/0/3] vlan mapping nni
# Configure Twenty-FiveGigE 1/0/3 as a trunk port.
[SwitchC-Twenty-FiveGigE1/0/3] port link-type trunk
# Assign Twenty-FiveGigE 1/0/3 to the translated VLANs.
[SwitchC-Twenty-FiveGigE1/0/3] port trunk permit vlan 501 to 503
# Configure Twenty-FiveGigE 1/0/3 as a DHCP snooping trusted and ARP trusted port.
[SwitchC-Twenty-FiveGigE1/0/3] dhcp snooping trust
[SwitchC-Twenty-FiveGigE1/0/3] arp detection trust
[SwitchC-Twenty-FiveGigE1/0/3] quit
```

4. Configure Switch D:

```
# Create the translated VLANs.
<SwitchD> system-view
[SwitchD] vlan 501 to 503
# Configure Twenty-FiveGigE 1/0/1 as a trunk port.
<SwitchD> system-view
[SwitchD] interface twenty-fivegige 1/0/1
[SwitchD-Twenty-FiveGigE1/0/1] port link-type trunk
# Assign Twenty-FiveGigE 1/0/1 to the translated VLANs.
[SwitchD-Twenty-FiveGigE1/0/1] port trunk permit vlan 501 to 503
[SwitchD-Twenty-FiveGigE1/0/1] quit
```

Verifying the configuration

Verify VLAN mapping information on the wiring-closet switches, for example, Switch A.

```
[SwitchA] display vlan mapping
Interface Twenty-FiveGigE1/0/1:
  Outer VLAN   Inner VLAN   Translated Outer VLAN   Translated Inner VLAN
  1             N/A         101                     N/A
  2             N/A         201                     N/A
  3             N/A         301                     N/A
Interface Twenty-FiveGigE1/0/2:
  Outer VLAN   Inner VLAN   Translated Outer VLAN   Translated Inner VLAN
  1             N/A         102                     N/A
  2             N/A         202                     N/A
  3             N/A         302                     N/A
```

Verify VLAN mapping information on Switch C.

```
[SwitchC] display vlan mapping
Interface Twenty-FiveGigE1/0/1:
  Outer VLAN   Inner VLAN   Translated Outer VLAN   Translated Inner VLAN
  101-102      N/A         501                     N/A
  201-202      N/A         502                     N/A
  301-302      N/A         503                     N/A
Interface Twenty-FiveGigE1/0/2:
  Outer VLAN   Inner VLAN   Translated Outer VLAN   Translated Inner VLAN
  103-104      N/A         501                     N/A
  203-204      N/A         502                     N/A
  303-304      N/A         503                     N/A
```

Example: Configuring one-to-two and two-to-two VLAN mapping

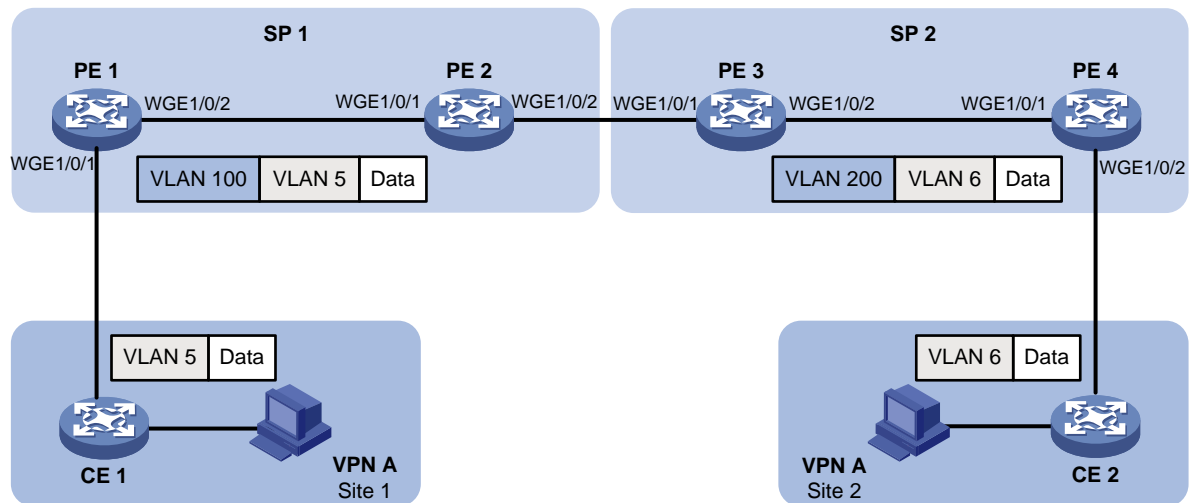
Network configuration

As shown in [Figure 9](#):

- Two VPN A branches, Site 1 and Site 2, are in VLAN 5 and VLAN 6, respectively.
- The two sites use different VPN access services from different service providers, SP 1 and SP 2.
- SP 1 assigns VLAN 100 to Site 1 and Site 2. SP 2 assigns VLAN 200 to Site 1 and Site 2.

Configure one-to-two VLAN mappings and two-to-two VLAN mappings to enable the two branches to communicate across networks SP 1 and SP 2.

Figure 9 Network diagram



Procedure

1. Configure PE 1:


```
# Create VLANs 5 and 100.
<PE1> system-view
[PE1] vlan 5
[PE1-vlan5] quit
[PE1] vlan 100
```

```
[PE1-vlan100] quit
# Configure a one-to-two VLAN mapping on the customer-side port (Twenty-FiveGigE 1/0/1) to
add SVLAN tag 100 to packets from VLAN 5.
[PE1] interface twenty-fivegige 1/0/1
[PE1-Twenty-FiveGigE1/0/1] vlan mapping nest single 5 nested-vlan 100
# Configure Twenty-FiveGigE 1/0/1 as a hybrid port.
[PE1-Twenty-FiveGigE1/0/1] port link-type hybrid
# Assign Twenty-FiveGigE 1/0/1 to VLAN 100 as an untagged member.
[PE1-Twenty-FiveGigE1/0/1] port hybrid vlan 100 untagged
[PE1-Twenty-FiveGigE1/0/1] quit
# Configure the network-side port (Twenty-FiveGigE 1/0/2) as a trunk port.
[PE1] interface twenty-fivegige 1/0/2
[PE1-Twenty-FiveGigE1/0/2] port link-type trunk
# Assign Twenty-FiveGigE 1/0/2 to VLAN 100.
[PE1-Twenty-FiveGigE1/0/2] port trunk permit vlan 100
[PE1-Twenty-FiveGigE1/0/2] quit
```

2. Configure PE 2:

```
# Create VLAN 100.
<PE2> system-view
[PE2] vlan 100
[PE2-vlan100] quit
# Configure Twenty-FiveGigE 1/0/1 as a trunk port.
[PE2] interface twenty-fivegige 1/0/1
[PE2-Twenty-FiveGigE1/0/1] port link-type trunk
# Assign Twenty-FiveGigE 1/0/1 to VLAN 100.
[PE2-Twenty-FiveGigE1/0/1] port trunk permit vlan 100
[PE2-Twenty-FiveGigE1/0/1] quit
# Configure Twenty-FiveGigE 1/0/2 as a trunk port.
[PE2] interface twenty-fivegige 1/0/2
[PE2-Twenty-FiveGigE1/0/2] port link-type trunk
# Assign Twenty-FiveGigE 1/0/2 to VLAN 100.
[PE2-Twenty-FiveGigE1/0/2] port trunk permit vlan 100
[PE2-Twenty-FiveGigE1/0/2] quit
```

3. Configure PE 3:

```
# Create VLANs 5, 6, 100, and 200.
<PE3> system-view
[PE3] vlan 5 to 6
[PE3] vlan 100
[PE3-vlan100] quit
[PE3] vlan 200
[PE3-vlan200] quit
# Configure Twenty-FiveGigE 1/0/1 as a trunk port.
[PE3] interface twenty-fivegige 1/0/1
[PE3-Twenty-FiveGigE1/0/1] port link-type trunk
# Assign Twenty-FiveGigE 1/0/1 to VLANs 100 and 200.
[PE3-Twenty-FiveGigE1/0/1] port trunk permit vlan 100 200
```

Configure a two-to-two VLAN mapping on Twenty-FiveGigE 1/0/1 to map SVLAN 100 and CVLAN 5 to SVLAN 200 and CVLAN 6.

```
[PE3-Twenty-FiveGigE1/0/1] vlan mapping tunnel 100 5 translated-vlan 200 6
[PE3-Twenty-FiveGigE1/0/1] quit
```

Configure Twenty-FiveGigE 1/0/2 as a trunk port.

```
[PE3] interface twenty-fivegige 1/0/2
[PE3-Twenty-FiveGigE1/0/2] port link-type trunk
```

Assign Twenty-FiveGigE 1/0/2 to VLAN 200.

```
[PE3-Twenty-FiveGigE1/0/2] port trunk permit vlan 200
[PE3-Twenty-FiveGigE1/0/2] quit
```

4. Configure PE 4:

Create VLANs 6 and 200.

```
<PE4> system-view
[PE4] vlan 6
[PE4-vlan6] quit
[PE4] vlan 200
[PE4-vlan200] quit
```

Configure the network-side port (Twenty-FiveGigE 1/0/1) as a trunk port.

```
[PE4] interface twenty-fivegige 1/0/1
[PE4-Twenty-FiveGigE1/0/1] port link-type trunk
```

Assign Twenty-FiveGigE 1/0/1 to VLAN 200.

```
[PE4-Twenty-FiveGigE1/0/1] port trunk permit vlan 200
[PE4-Twenty-FiveGigE1/0/1] quit
```

Configure the customer-side port (Twenty-FiveGigE 1/0/2) as a hybrid port.

```
[PE4] interface twenty-fivegige 1/0/2
[PE4-Twenty-FiveGigE1/0/2] port link-type hybrid
```

Assign Twenty-FiveGigE 1/0/2 to VLAN 200 as an untagged member.

```
[PE4-Twenty-FiveGigE1/0/2] port hybrid vlan 200 untagged
```

Configure a one-to-two VLAN mapping on Twenty-FiveGigE 1/0/2 to add SVLAN tag 200 to packets from VLAN 6.

```
[PE4-Twenty-FiveGigE1/0/2] vlan mapping nest single 6 nested-vlan 200
[PE4-Twenty-FiveGigE1/0/2] quit
```

Verifying the configuration

Verify VLAN mapping information on PE 1.

```
[PE1] display vlan mapping
Interface Twenty-FiveGigE1/0/1:
  Outer VLAN   Inner VLAN   Translated Outer VLAN   Translated Inner VLAN
  5             N/A         100                     5
```

Verify VLAN mapping information on PE 3.

```
[PE3] display vlan mapping
Interface Twenty-FiveGigE1/0/1:
  Outer VLAN   Inner VLAN   Translated Outer VLAN   Translated Inner VLAN
  100          5           200                     6
```

Verify VLAN mapping information on PE 4.

```
[PE4] display vlan mapping
Interface Twenty-FiveGigE1/0/2:
  Outer VLAN   Inner VLAN   Translated Outer VLAN   Translated Inner VLAN
```

6

N/A

200

6